

# FABULA

LIVING



Collection 2021

---

Design Tradition Craftsmanship

# Fabula Living

DESIGN TRADITION CRAFTSMANSHIP

---

Fabula Living has established itself as an international design company deeply rooted in traditional techniques, craftsmanship, uncompromising quality and Danish design. We aim to tell stories with our modern rugs by bringing together design, tradition and simple style with the oriental techniques. It's this behind the scenes creative process that makes the designs stand out. Fabula Living is much more than modern interior design. The careful selection of wool, linen, cotton and other raw materials and shades of colour, the passion and patience, the thickness and the details in the weaving are present like invisible threads in all our rugs.



## Collection 2021

### Slow Beauty

The 2021 collection welcomes refreshing renewal and soothing simplicity. A sense of grounding paired with an uplifting glow of new natural colours.

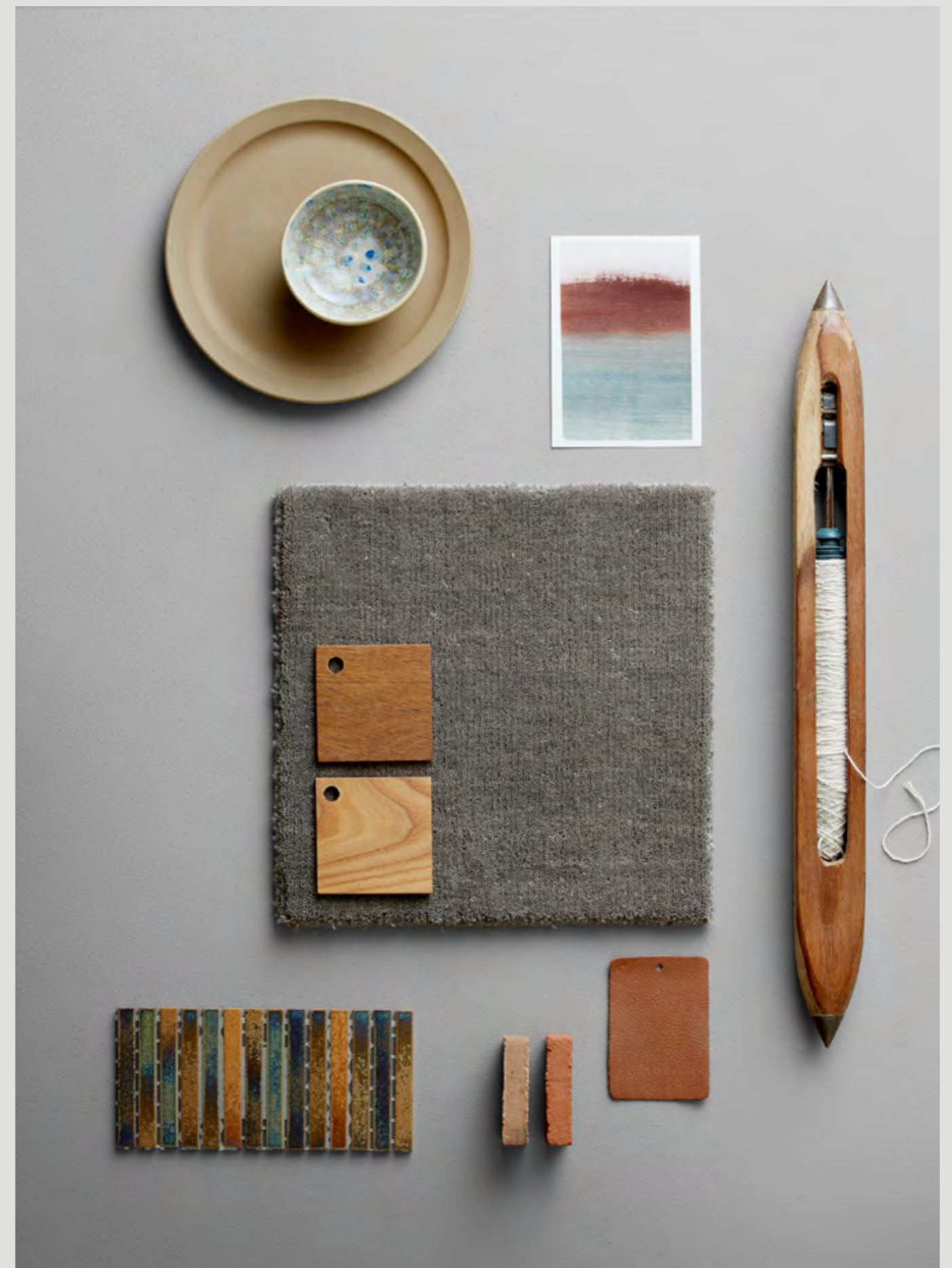
As our home life is evolving our new designs wrap our living spaces in soft, slow beauty and what we like to call the feel-good factor, the deeper layer in the collection.

The four new designs showcase our desire to explore and refine the quality in all the steps that goes into creating ultimate high-quality rugs and classic and contemporary aesthetics that is receptive to the shifts around us. With Frida and Nanna, we are offering an understated Scandinavian spin on lush, luxury, high-pile rugs, and with the hand-woven kilim rugs Una and Rune we have played

with colours like aquamarine, amber, aubergine and subtle patterns in the weave.

All our colours from the more current shades to the timeless greys and sandy tones are inspired by nature making them easy to style with any material and decor. Longevity, durability and a timeless touch make each of the new designs a sustainable choice.

All come in the larger size 250x350 cm, perfect for uniting smaller sections for cosy gatherings around the dinner table or coffee table. More practical, more stylish and an important part of updating the home with softness, layers and tactility.





# Contents

4	COLLECTION 2021	54	LOKE
8	FRIDA	58	TANNE
10	NANNA	60	LILY
12	UNA	62	NEW FREJA
14	RUNE	64	THOR
18	GIMLE	66	ODIN
20	FELICIA	68	ANGELICA
22	GISLI	70	VERONICA
24	NJORD	74	BELLIS
26	GRO	76	CAMELIA
28	BALDER	78	LOTUS
30	MUNIN	80	ROSEMARY
32	HUGIN	82	POPPY
34	ASTER		
36	CALLA	84	FULL COLLECTION
38	FENRIS		
40	ROLF	88	SIZE GUIDE
44	ASK	90	MADE TO MEASURE
46	GJALL	92	UNDERLAY
50	ERICA	92	HOW TO CARE
52	GORM	93	CERTIFICATES



1212 BEIGE



1616 GREY

## Frida

DESIGN / JENS LANDBERG SCHRØDER

Hand-loom pile rug in New Zealand wool on cotton warp

170x240, 200x300, 240x240, 250x350 cm

Made to measure

The beauty is in the fine details of this high-quality hand-loom pile rug. Combining wool in the best quality, a discreet colour palette of beige and grey and a neutral style, Frida is pure simplicity at its best. The special weaving technique allows natural ventilation under the rug.

# Nanna

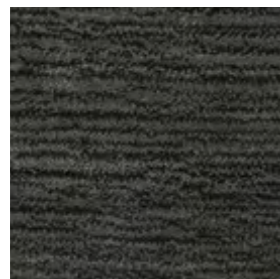
DESIGN / JENS LANDBERG SCHRØDER

Hand-loom pile rug in New Zealand wool on cotton warp

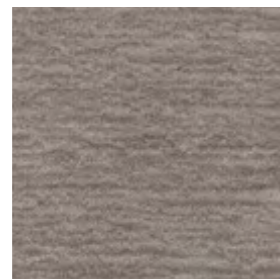
170x240, 200x300, 250x350 cm

Made to measure

The quality of this thick hand-loom pile rug is softer than soft, and the careful merge of three threads gives the surface a natural glowing finish. With a saturated warm colour palette of charcoal, warm grey, light grey and ultimate durability, the Nanna rug will bring long-lasting joy in any home.



1414 CHARCOAL



1616 WARM GREY



2727 LIGHT GREY





# Una

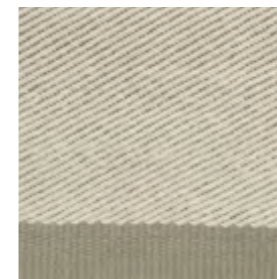
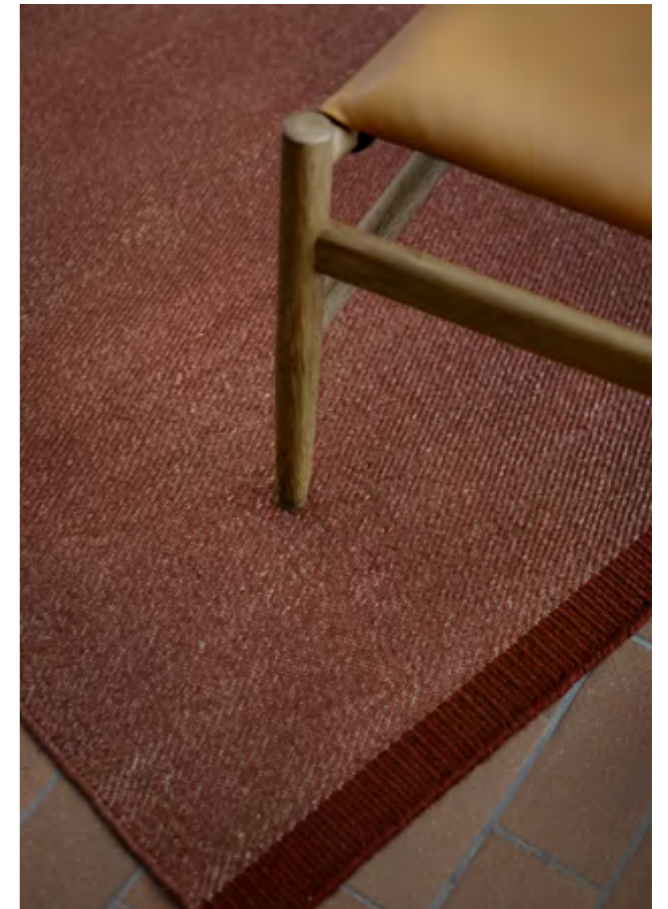
DESIGN / JENS LANDBERG SCHRØDER

Hand-woven rug in New Zealand wool and linen on cotton warp, reversible

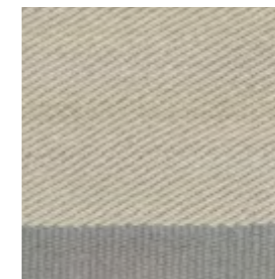
170x240, 200x300, 250x350 cm

Made to measure

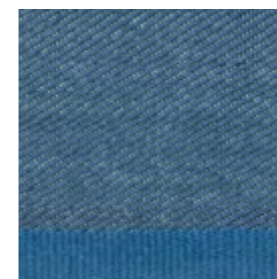
A mixture of the best quality New Zealand wool and linen on dyed cotton warp gives this hand-woven rug a harmonious three-dimensional surface and adds durability to the list of its many qualities. The elegant design is sharpened by a border complementing the selection of colours - deep glowing amber, lingonberry, aquamarine and two soft natural light colours.



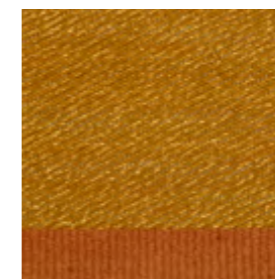
1116 OFF WHITE/GREY



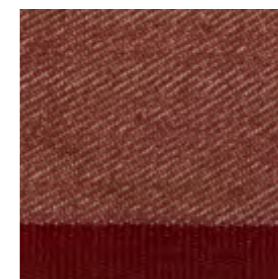
2716 LIGHT GREY/GREY



1717 AQUAMARINE



5252 AMBER



3053 LINGONBERRY



# Rune

DESIGN / JENS LANDBERG SCHRÖDER

Hand-woven rug in New Zealand wool on cotton warp, reversible

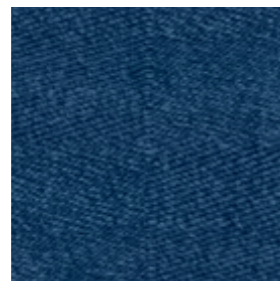
140x200, 170x240, 200x300, 250x350 cm

Made to measure

There is an understated luxury in this hand-woven rug made from high-quality wool in beautiful indigo, grey and forest green with a slight golden tone. Up close the tight weave reveals a discreet diamond pattern as a result of a complicated weaving technique and a meticulous process, where the wool has been hand-spun with several threads.



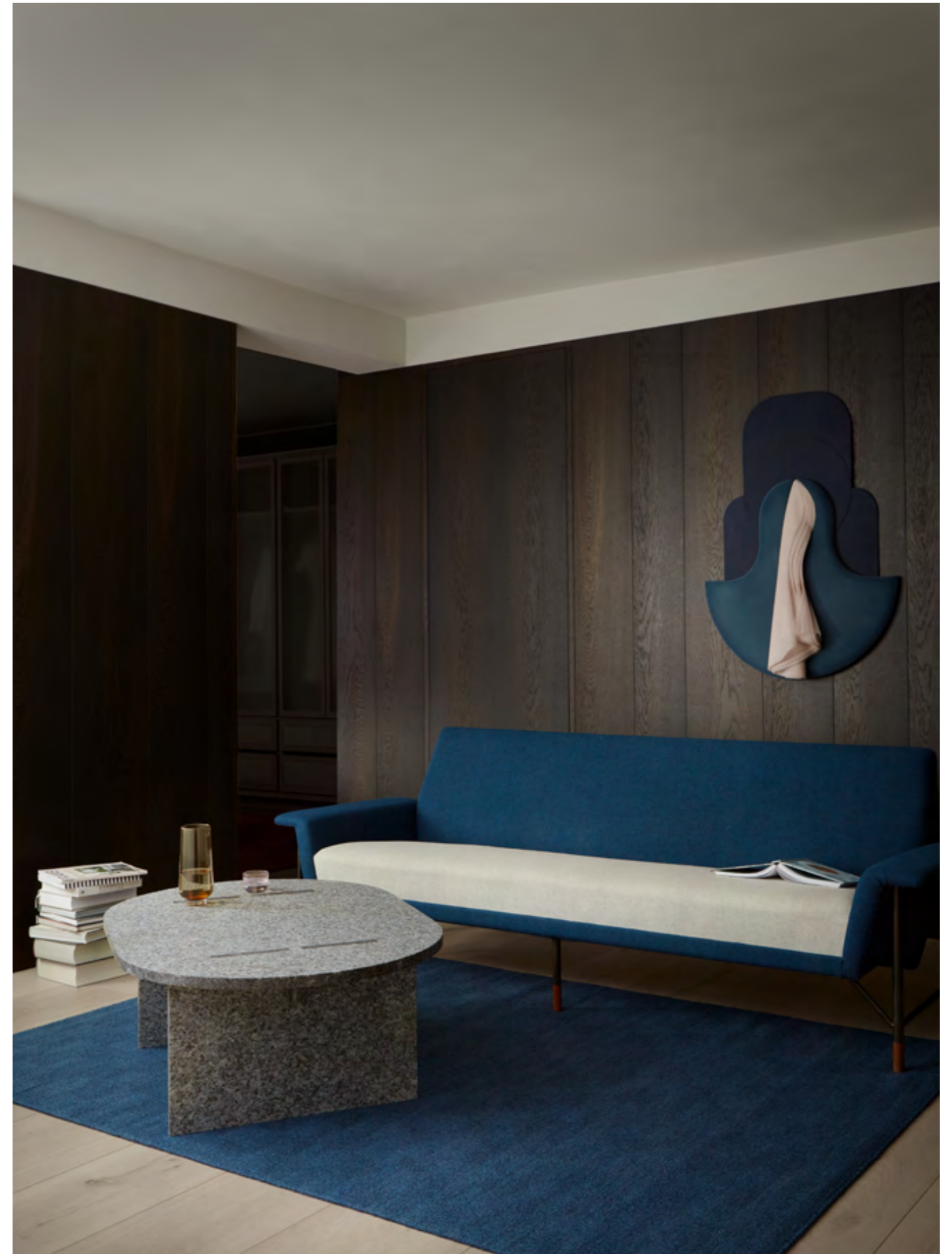
1616 GREY



1717 INDIGO



1818 FOREST







A rug is an essential layer in a textured mix of raw, honest and natural materials drawing us closer to nature's slow and balanced beauty.



# Gimle

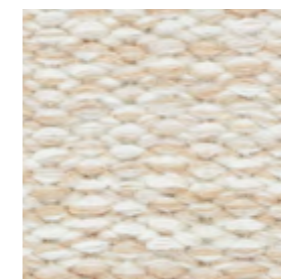
DESIGN / JENS LANDBERG SCHRØDER

Hand-woven rug in New Zealand wool on cotton warp, reversible

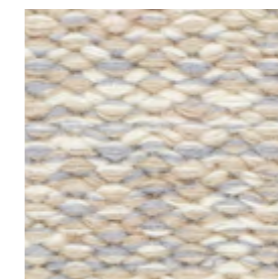
140x200, 170x240, 200x300 cm

Made to measure

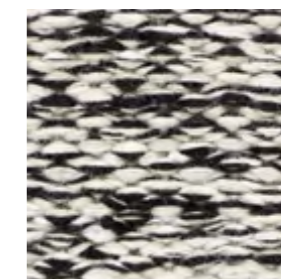
A shimmering look brings out the two shades creating a stunning visual. This is the thickest flat pile rug in the collection and is extremely versatile when decorating a home. With three new golden and soft natural colours, the popular, classic design Gimle now comes in exciting range drawing from the Scandinavian natural colour palette. The soft leaf green, willow, golden burnt cork, and the autumn faded rose maple harmoniously cover the range of a leaf's natural defoliation. Each shade complements the thick flat pile quality and the stunning two shade mottling effect on the hand-woven rug in New Zealand wool. With seven different colour combinations, Gimle is extremely versatile when decorating a home.



1011 WHITE/OFF WHITE



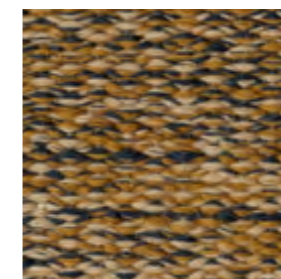
1211 BEIGE/GREY



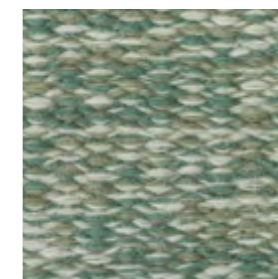
1215 OFF WHITE/BLACK



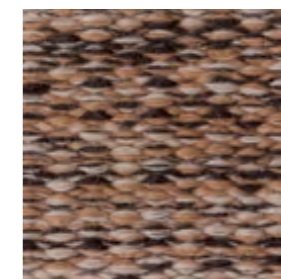
1511 BLACK/OFF WHITE



5252 CORK



1818 WILLOW



3030 MAPLE



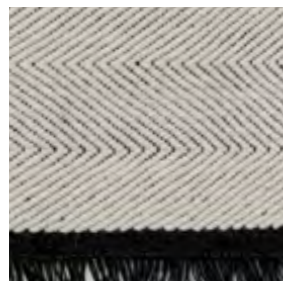
# Felicia

DESIGN / LISBET FRIIS

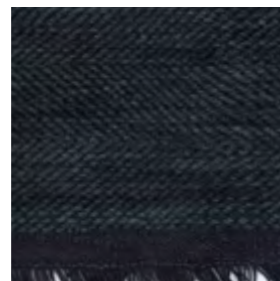
Hand-woven rug in New Zealand wool on linen warp, reversible

140x200, 170x240, 200x300 cm  
Made to measure

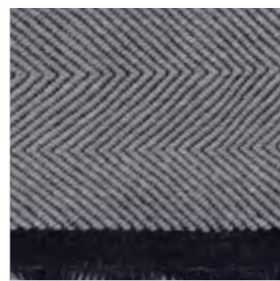
With the traditional herringbone pattern enlarged and embedded in the design, Felicia showcases beautiful craftsmanship. The darker shade on the linen warp makes the pattern stand out in this hand-woven kilim rug finished off with graphite fringes. Felicia infuses any space with its relaxed and simple, elegant look in four muted, natural off white and greyish hues.



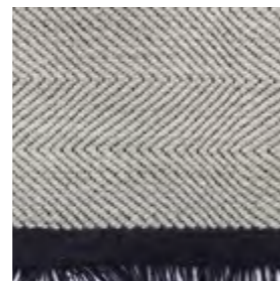
1111 OFF WHITE



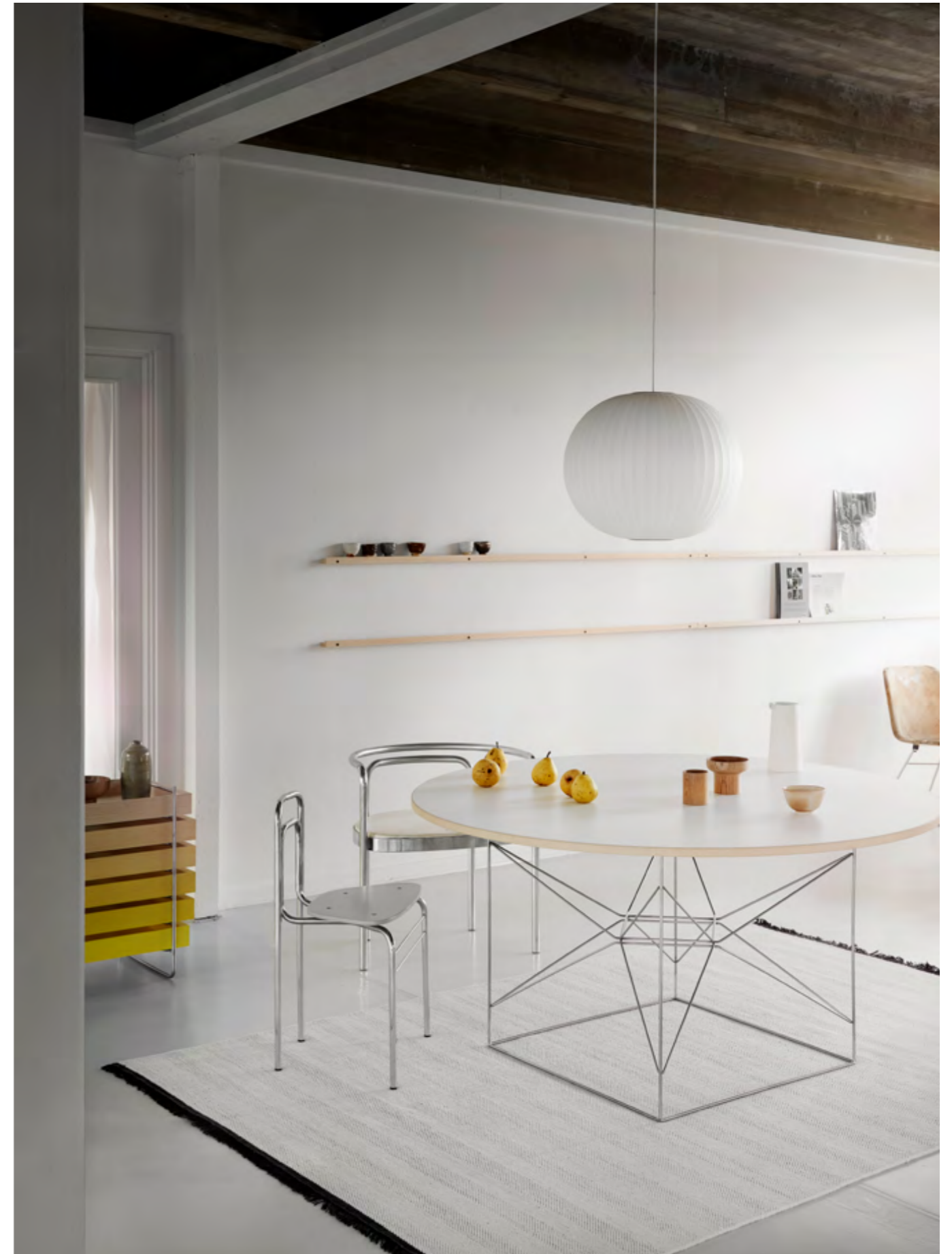
1414 GRAPHITE



1616 GREY



2727 LIGHT GREY





# Gisli

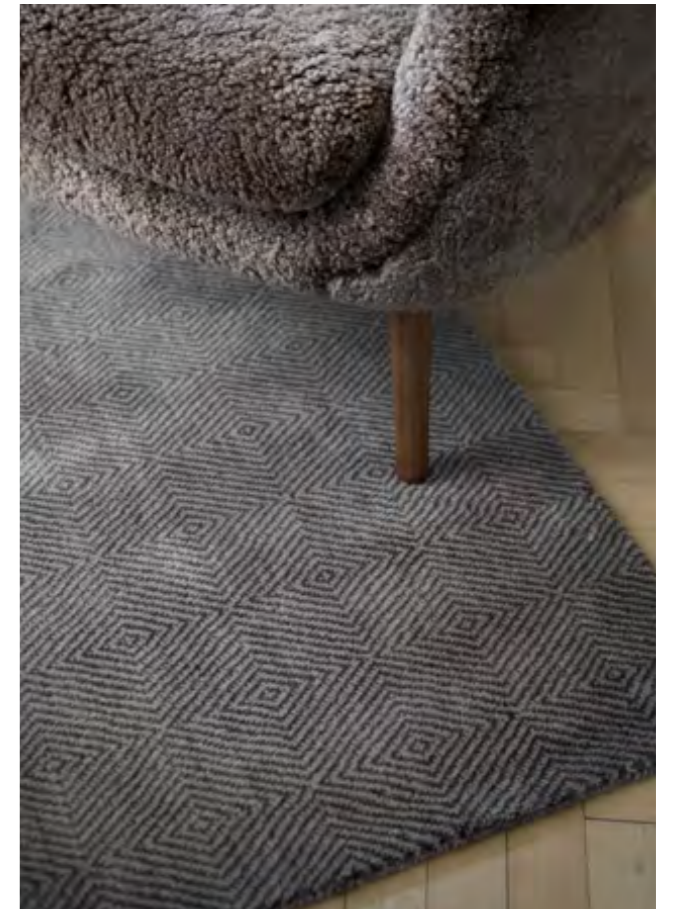
DESIGN / JENS LANDBERG SCHRØDER

Hand-loom pile rug in New Zealand wool on cotton warp

170x240, 200x300 cm

Made to measure

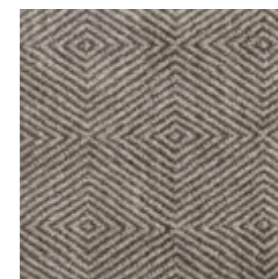
The impeccable finish, the tone-in-tone shades and a stunning diamond pattern make Gisli a rug with a tactile feel bringing an extra touch of exclusivity to most interior. Hand-loomed in the best New Zealand wool on cotton warp for extra quality, this pile rug is classic with an intriguing twist and comes in saturated beige, charcoal and warm grey.



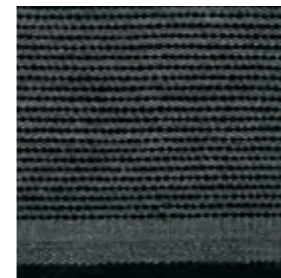
1212 BEIGE



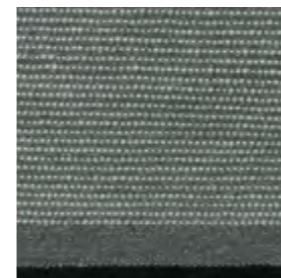
1414 CHARCOAL



1616 WARM GREY



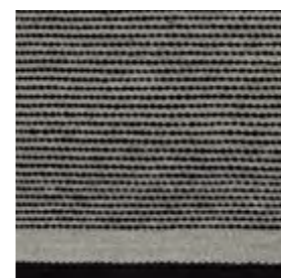
1415 CHARCOAL/BLACK



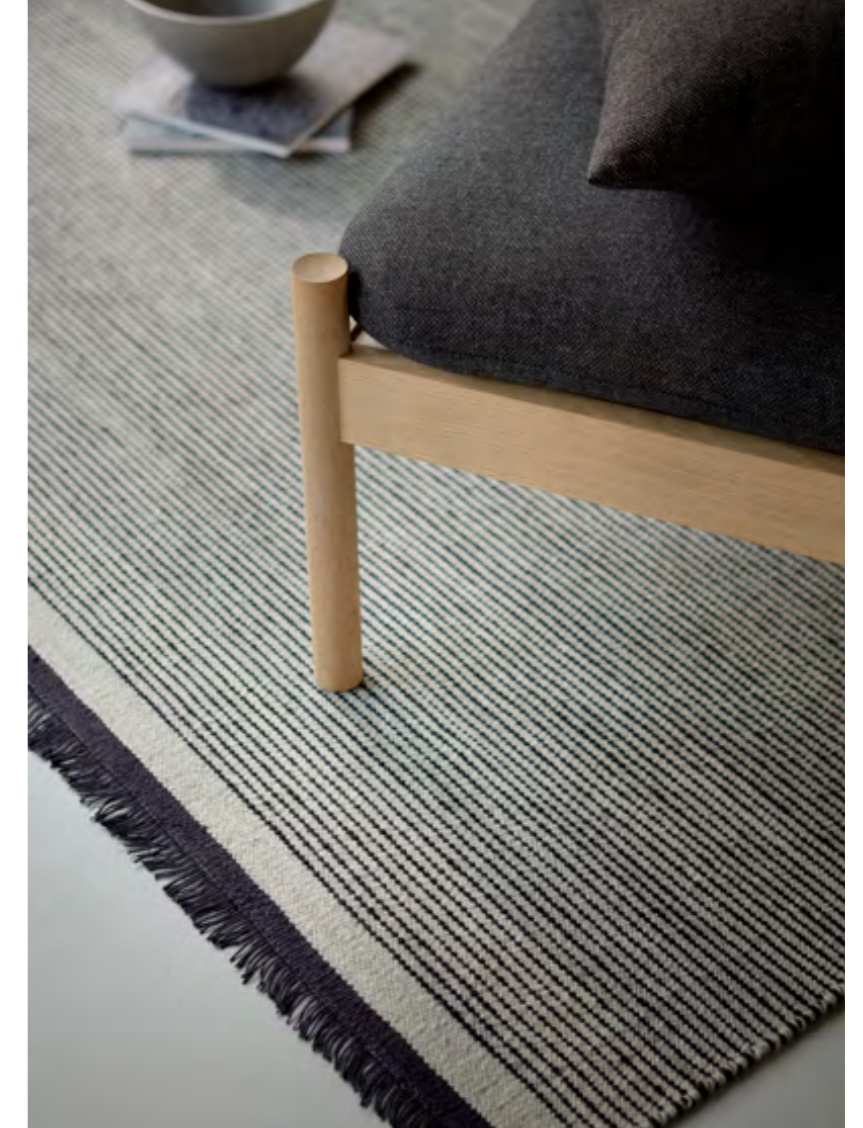
1610 GREY/WHITE



2710 LIGHT GREY/WHITE



2715 LIGHT GREY/BLACK



## Njord

DESIGN / JENS LANDBERG SCHRØDER

Hand-woven rug in New Zealand wool on linen warp, reversible

140x200, 170x240, 200x300, 250x350 cm

Made to measure

Njord is a versatile, understated, and undeniably Scandinavian kilim rug available in four colour combinations, all leaning towards a calm, natural muted palette of silvery and greyish tones. Using the special Gabbeh-dye technique, only partly dyeing the yarn, gives a lively flare to the striped design, which is elegantly finished off with black or bluish grey fringes. The fine weaving technique makes the rug reversible.

# Gro

DESIGN / JENS LANDBERG SCHRØDER

Hand-loom pile rug in New Zealand wool on cotton warp

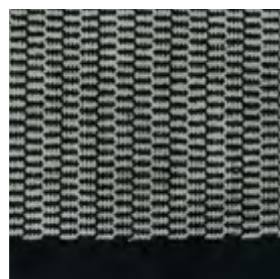
170x240, 200x300, 250x350 cm

Made to measure

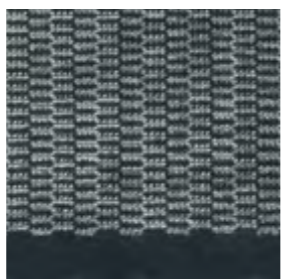
Graphic shapes paired with off white and beige and natural contrast colours form a stunning pattern framed with a simple edge. The fairly complicated pattern on this hand-loom pile rug has required next level craftsmanship. The top-quality New Zealand wool has been woven and cut to create a shimmering look changing with the light.



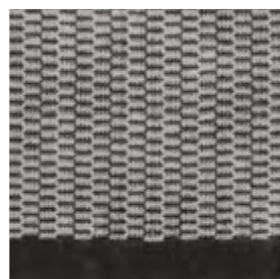
4712 OLIVE/BEIGE



1511 BLACK/OFF WHITE



4812 PETROL/BEIGE



1611 GREY/OFF WHITE





# Balder

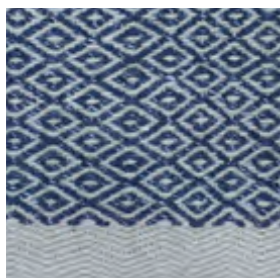
DESIGN / JENS LANDBERG SCHRÖDER

Hand-woven rug in New Zealand wool and linen on cotton warp, reversible

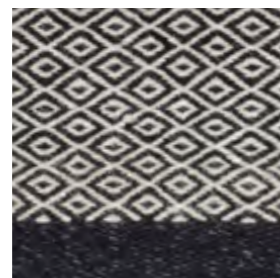
140x200, 170x240, 200x300 cm

Made to measure

A simple and sophisticated rug using hand-spun high-quality yarn. Mixing wool and linen in a very tight weave gives the classic goose eye pattern deliberately a slightly worn surface suggesting that this rug will only become more beautiful with time. The colour palette features golden honey, crisp beech leaves, umbra, forest grey, black and midnight. All shades are strong enough to stand out, soft enough to blend into a natural colour scheme and complement all wooden floor.



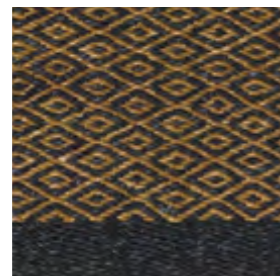
1629 GREY/MIDNIGHT BLUE



1516 BLACK/GREY



1818 FOREST



5252 UMBRA



1627 GREY/LIGHT GREY



# Munin

DESIGN / JENS LANDBERG SCHRØDER

Hand-woven in- and outdoor rug in polypropylene, polyester and viscose

200x300, 250x350 cm

Made with our uncompromising approach to craftsmanship, the Munin rug meets the highest standards of durability and aesthetics. The range of nature's own tones such as driftwood, stone, forest, and pinewood harmoniously complement the surroundings and create a cosy and elegant update to any outdoor space. By adding viscose to the mix of man-made textile fibres, the simple, rustic design stands out with a subtle shine. The good quality and the precise weave make the rug easy to keep and resistant to water and sunlight. The design also adds a feeling of comfort and definition to a conservatory, or works perfectly as a stylish and practical choice for a kitchen or dining room.



1212 DRIFTWOOD



1313 PINEWOOD



1818 FOREST



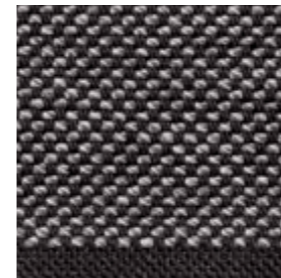
1414 STONE







1213 SAND/STONE



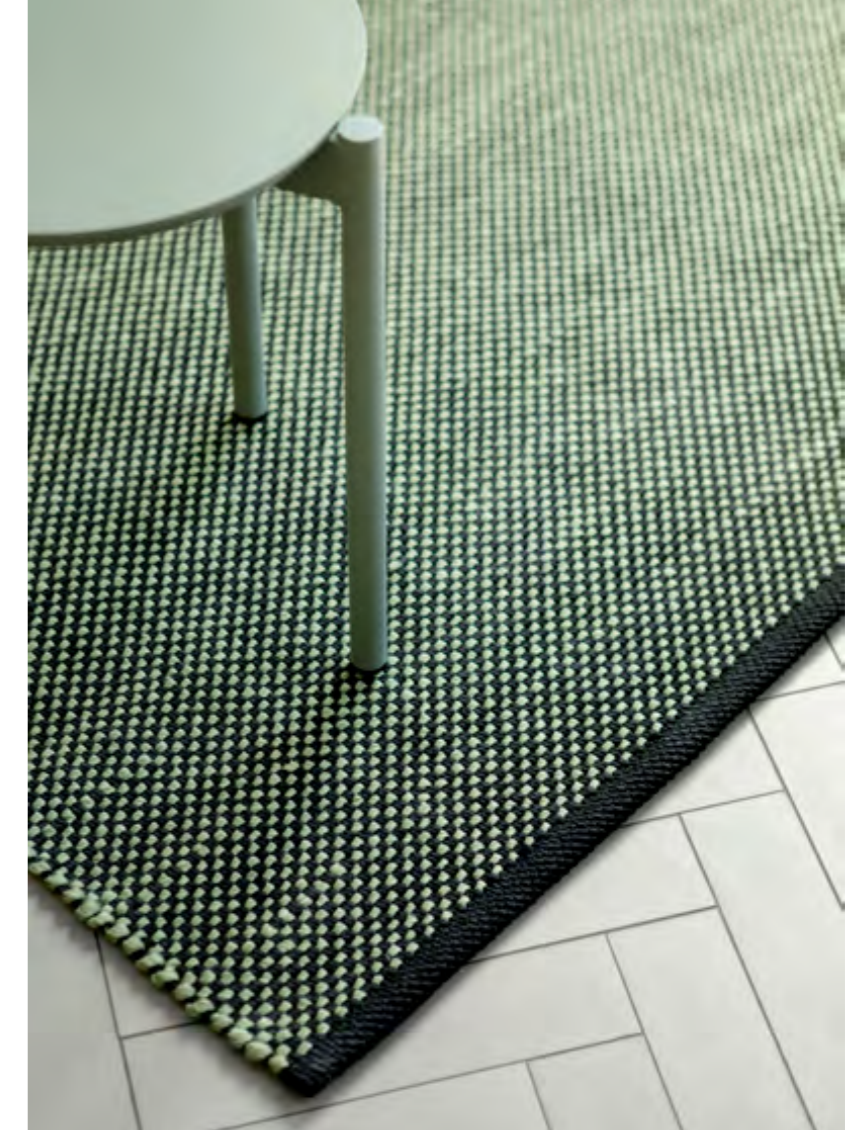
1516 BLACK/GREY



1518 BLACK/FOREST



1548 BLACK/OLIVE



## Hugin

DESIGN / JENS LANDBERG SCHRÖDER

Hand-woven in-and outdoor rug in polypropylene, polyester and viscose

200x300, 250x350 cm

With a perfect blend of high quality and clean, simple style, the Hugin rug can transform a balcony or terrace to a cosy outdoor living room. It's available in a range of natural colours and hand-woven with an advanced mix of man-made textile fibres making it durable enough to withstand water and sunlight. This rug is slightly finer than the more rustic sister design, Munin, and has discreet two-toned pattern. The design also adds a feeling of comfort and definition to a conservatory, or works perfectly as a stylish and practical choice for a kitchen or dining room.



# Aster

DESIGN / LISBET FRIIS

Hand-loom pile rug in New Zealand wool on cotton warp

170x240, 200x300 cm

Made to measure

A luxurious and lush rug with a simple classic look and qualities inspired by nature. This hand-loom pile rug in the best New Zealand wool is so thick that it resembles walking on the soft forest ground. Aster has a striped structure with a simple edge, comes in grey, olive, almost moss green and complements most interior styles.

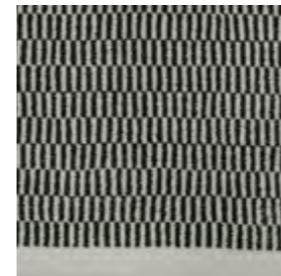


4715 OLIVE/BLACK

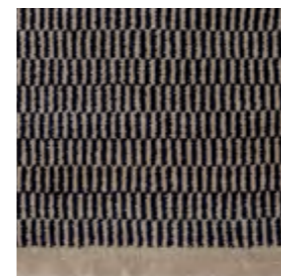


1615 GREY/BLACK





1016 WHITE/GREY



1229 BEIGE/MIDNIGHT BLUE



1512 BLACK/BEIGE



1615 GREY/BLACK



## Calla

DESIGN / LISBET FRIIS

Hand-loom pile rug in New Zealand wool and viscose on cotton warp

170x240, 200x300 cm

Made to measure

Calla is a posh, yet ultra-modern hand-loom pile rug balancing elegance and functionality. Drawing subtle inspiration from oriental rugs, it has a lustrous and lively patterned surface, which appears calm thanks to the quality of wool and the meticulous mixing of the colours. With midnight blue and beige hinting on silver, this rug brings timeless beauty to a living room and bedroom.



# Fenris

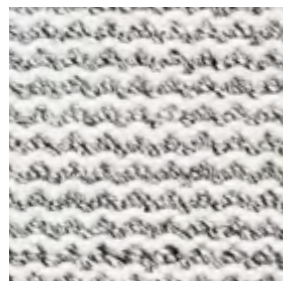
DESIGN / JENS LANDBERG SCHRØDER

Hand-woven rug in New Zealand wool and raw wool on cotton warp, reversible

140x200, 170x240, 200x300, 250x350 cm

Made to measure

This slightly rustic hand-woven rug in a thick quality with a soft natural colour scheme is a very harmonic design, complementing different types of wood and styles in a home. The tones and texture come out intentionally irregular thanks to the combination of a shimmering hand-spun natural wool yarn and pure New Zealand wool.



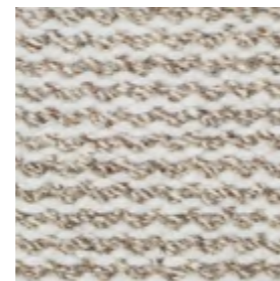
1116 OFF WHITE/GREY



1629 GREY/MIDNIGHT BLUE



1525 BLACK/NATURE



1125 OFF WHITE/NATURE





# Rolf

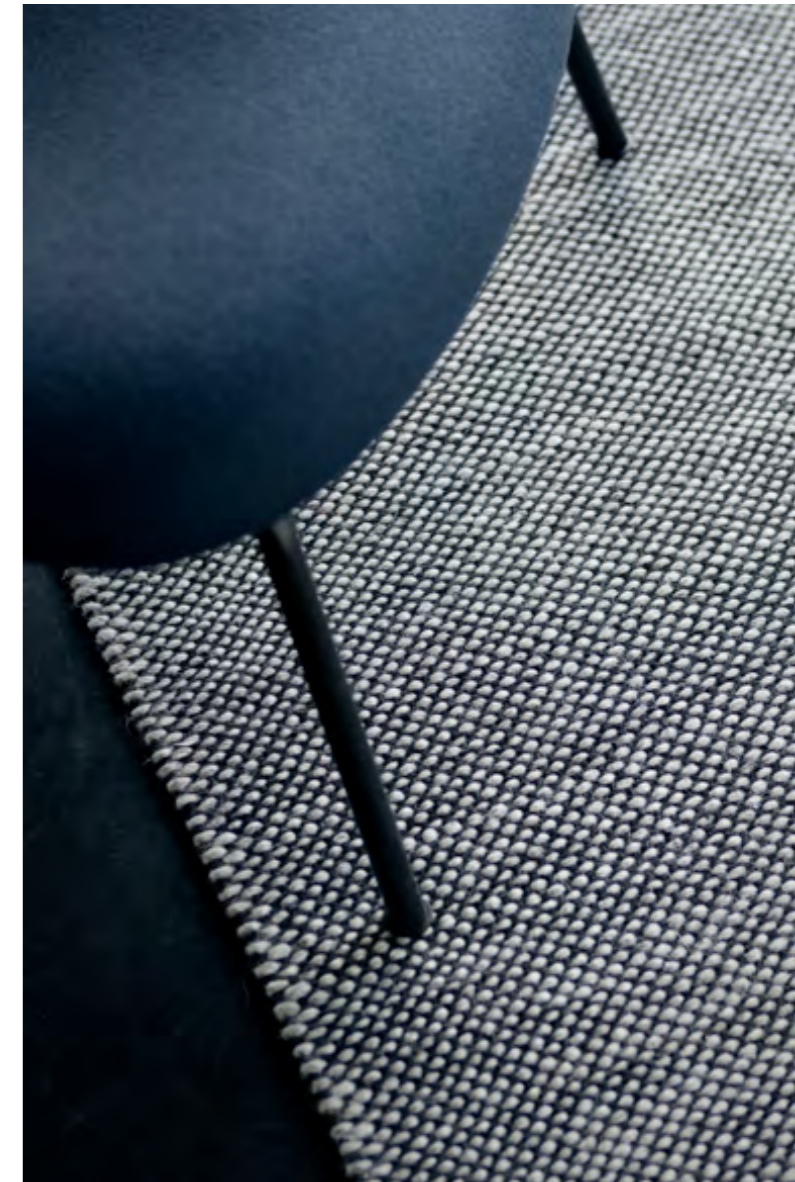
DESIGN / JENS LANDBERG SCHRØDER

Hand-woven rug in natural coloured New Zealand wool on cotton warp, reversible

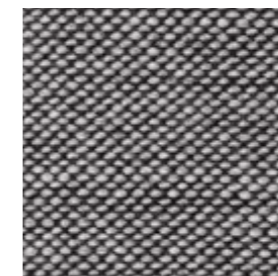
140x200, 170x240, 200x300 cm

Made to measure

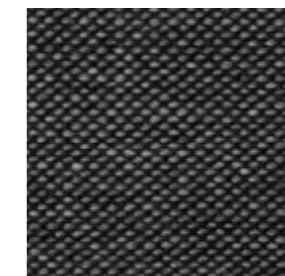
With a clean and simple design and pure wool in its natural white, grey and charcoal hues, this hand-woven rug is a step back to nature. The wool is undyed and the subdued life in the tones and textures comes from nature's own beautiful imperfection. The Rolf rug meets a strong desire for natural and sustainable design. The thick quality makes it a very durable rug with the added bonus of being reversible, which can double the life span.



1112 OFF WHITE/BEIGE



1615 GREY/BLACK



1415 CHARCOAL/BLACK

Darker or muted hues? Subtle backdrop or powerful statement? Cosy cocoons or spaciousness? Rugs create spaces and transform moods.





# Ask

DESIGN / JENS LANDBERG SCHRØDER

Hand-loom pile rug in Gabbeh-dyed New Zealand wool and linen on cotton warp

160x230, 200x300 cm

Made to measure

The uniqueness of this hand loom pile rug stems from a determined process of attention to every single detail. The quality of the New Zealand wool is outstanding and the many experiments mixing wool and a little bit of linen for contrast have resulted in a thicker and more exclusive rug. The linen adds a stylish lustre and a gentle Gabbeh-dye brings the soft shimmering in the pile. The choice of nature inspired colours completes the soft and exclusive design, which is versatile and makes an impact in any room.



1616 GREY



1414 CHARCOAL



1212 BEIGE





# Gjall

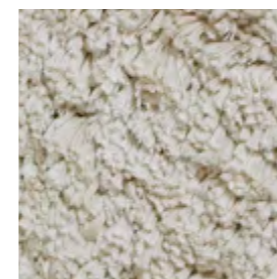
DESIGN / JENS LANDBERG SCHRØDER

Hand-woven high-pile rug in viscose on cotton warp

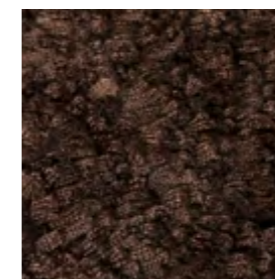
160x230, 200x300 cm

Made to measure

This very thick, pure viscose high-pile rug is the essence of cosy. The three-dimensional shading effect enhances the softness and the expression of colours, which range from subtle neutrals off white, grey, charcoal, petrol green to beautiful shades like pearl, topaz, amber and ruby inspired by nature's precious stones.



1212 BEIGE



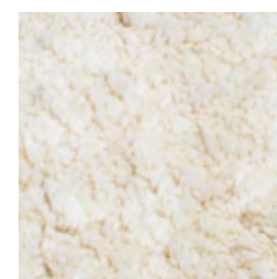
1313 BROWN



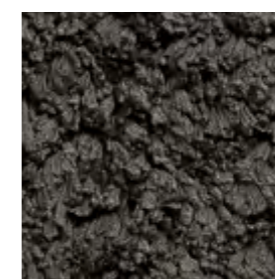
1616 GREY



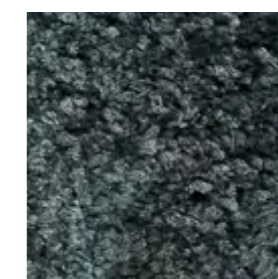
3939 DARK BEIGE



1010 WHITE



1414 CHARCOAL



4848 PETROL





# Gjall

DESIGN / JENS LANDBERG SCHRØDER

Hand-woven high-pile rug in viscose on cotton warp

160x230, 200x300 cm

Made to measure

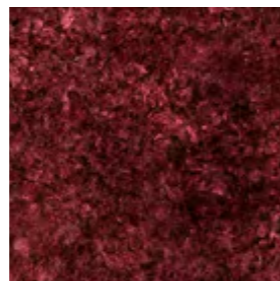
This very thick, pure viscose high-pile rug is the essence of cosy. The three-dimensional shading effect enhances the softness and the expression of colours, which range from subtle neutrals off white, grey, charcoal, petrol green to beautiful shades like pearl, topaz, amber and ruby inspired by nature's precious stones.



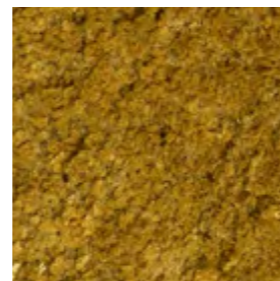
5252 AMBER



3030 PEARL



5353 RUBY



5151 TOPAZ



# Erica

DESIGN / LISBET FRIIS

Hand-woven rug in Gabbeh-dyed New Zealand wool on cotton warp

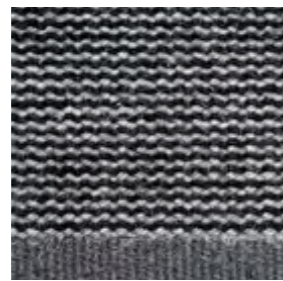
140x200, 170x240, 200x300, 250x350 cm

Made to measure

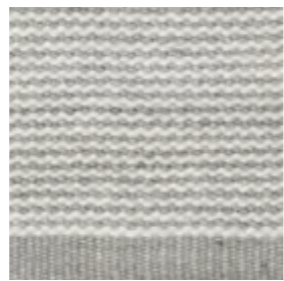
The thin stripes and the elegant shimmering created by a special Gabbeh-dye distinguish this subtle playful rug. This technique is also used for the same velvety shades of grey and light blue tones featured on the Angelica design making these two different hand-made rugs easy to mix for a layered texture in a stylish interior.



1411 CHARCOAL/OFF WHITE



1516 BLACK/GREY



2711 LIGHT GREY/OFF WHITE



3811 LIGHT BLUE/OFF WHITE





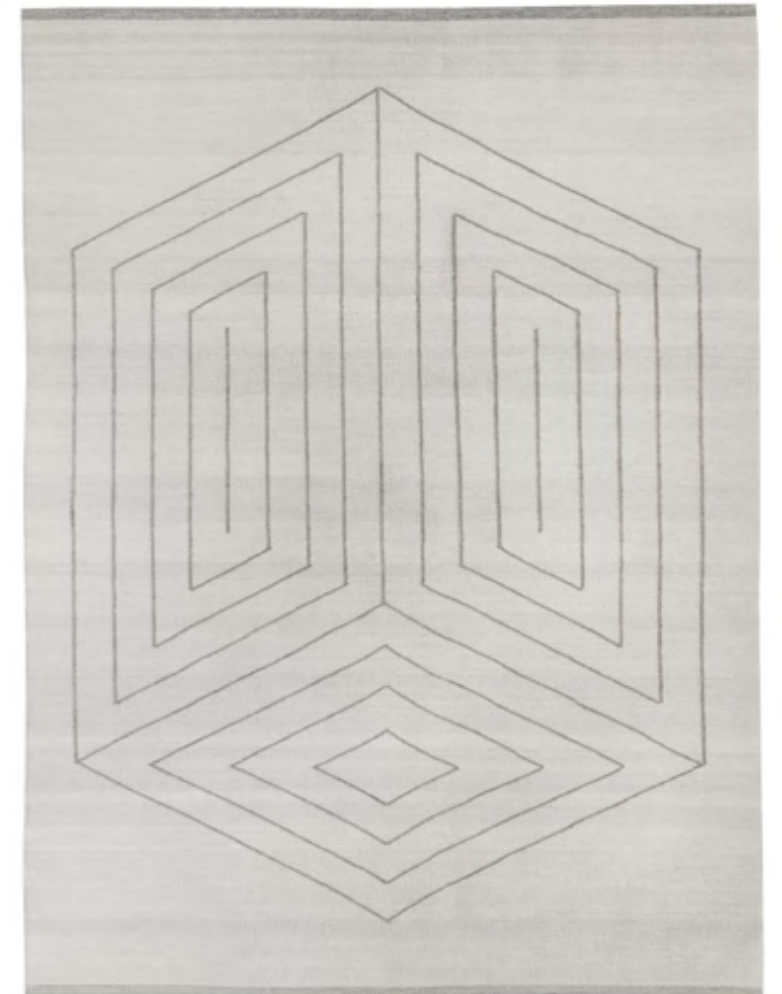
# Gorm

DESIGN / JENS LANDBERG SCHRØDER

Hand-woven rug in Gabbeh-dyed New Zealand wool on cotton warp

140x200, 170x240, 200x300 cm  
Made to measure

With a pattern inspired by a maths matrix this rug suits the clean-lined and cubistic design favoured in many modern homes. The wool has a flaming expression thanks to the special Gabbeh dye, which only partly colours the wool. Pure linen has been woven into the mix making it a tight and extremely durable rug, which comes in beautiful classic charcoal and light grey.



1414 CHARCOAL



2727 LIGHT GREY



# Loke

DESIGN / JENS LANDBERG SCHRØDER

Hand-loom pile rug in New Zealand wool on cotton warp

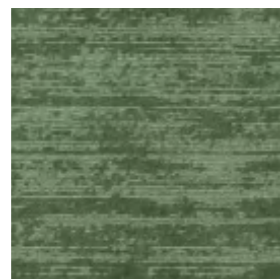
170x240, 200x300, 250x350 cm

Made to measure

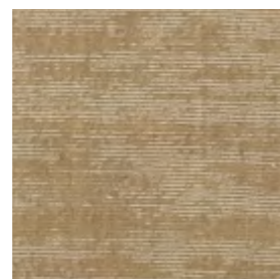
A modern piled rug, made in the finest New Zealand wool, which has a shiny and intense two-toned shimmer despite being uni-coloured. After weaving, the loops have been partly cut using a shaving technique, which has softened the surface and created the enhanced expression of colours.



2727 LIGHT GREY



3737 DUSTY GREEN



1212 BEIGE





# Loke

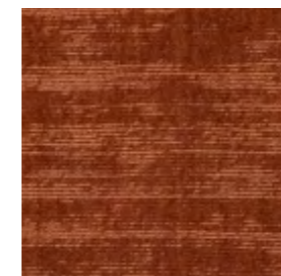
DESIGN / JENS LANDBERG SCHRØDER

Hand-loom pile rug in New Zealand wool on cotton warp

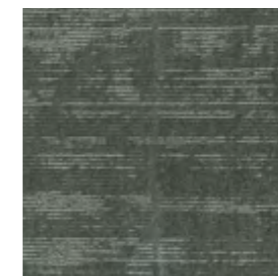
170x240, 200x300, 250x350 cm

Made to measure

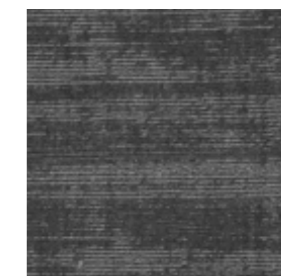
A modern piled rug, made in the finest New Zealand wool, which has a shiny and intense two-toned shimmer despite being uni-coloured. After weaving, the loops have been partly cut using a shaving technique, which has softened the surface and created the enhanced expression of colours.



2020 TERRACOTTA



4848 PETROL



1616 GREY



1414 CHARCOAL

# Tanne

DESIGN / JENS LANDBERG SCHRØDER

Hand-woven rug in New Zealand wool on cotton warp, reversible

140x200, 170x240, 200x300 cm

Made to measure

This reversible hand-woven rug in pure New Zealand wool fuses a simple contemporary pattern, soft colours and exquisite quality. This very durable rug comes in four different colour combinations, blending natural hues.



1015 WHITE/BLACK



1510 BLACK/WHITE



1610 GREY/WHITE



1016 WHITE/GREY





# Lily

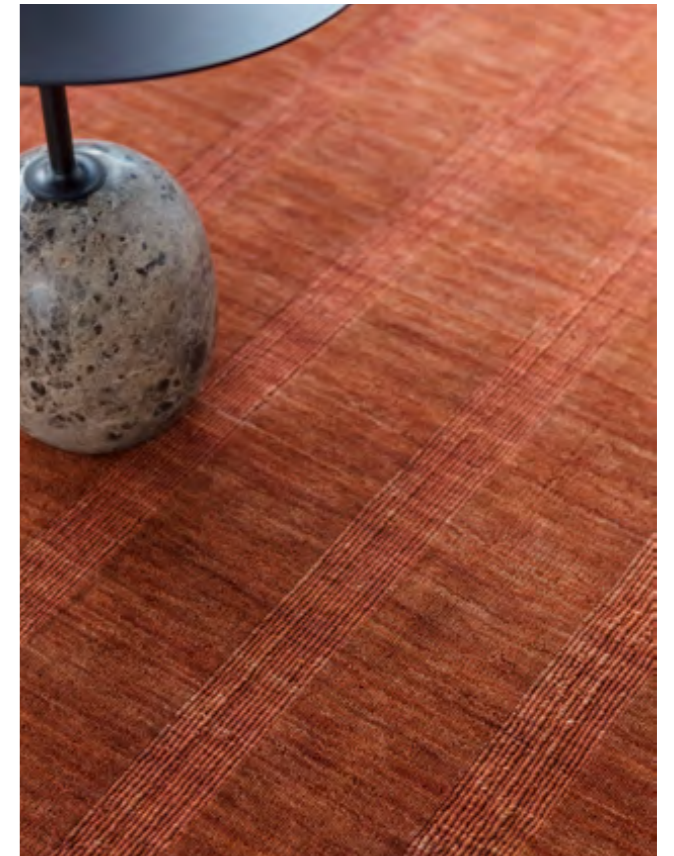
DESIGN / LISBET FRIIS

Hand-loom pile rug in Gabbeh-dyed New Zealand wool on cotton warp

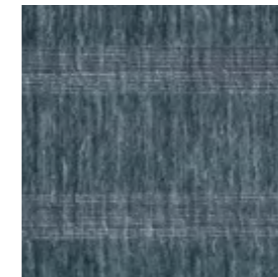
170x240, 200x300 cm

Made to measure

Four exclusive vivacious colours bring a sense of lush fairy tale to the Lily rug, which is woven with the same hand-loom pile technique as Loke. Lisbet Friis has added her signature touch and created soft harmony and contrasts with stripes. The wool piles have been cut in a special way creating an effect of changing the shine and texture depending on how the light falls on the rug. The Gabbeh-dye enhances the rich natural colours.



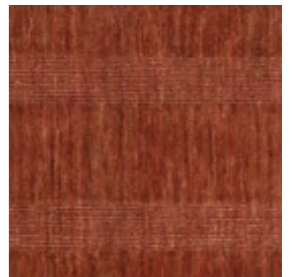
1414 SMOKE



2929 NIGHT SKY



1212 MARBLE



1919 ORIENTAL RED

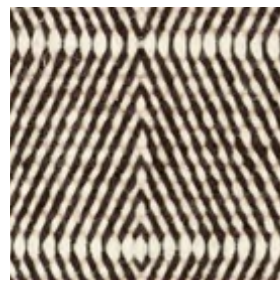
# New Freja

DESIGN / JENS LANDBERG SCHRØDER

Hand-woven rug in New Zealand wool on cotton warp, reversible

140x200, 170x240, 200x300 cm,

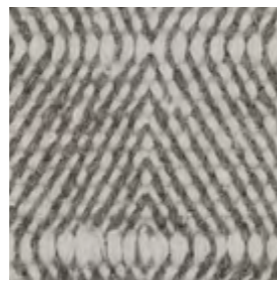
One of the pure New Zealand wool rugs, hand-woven and made in a classic simple pattern that stands out and also blends in a modern home. The colours are a classic, natural mix of brown, grey and soft natural beige and off white.



1013 WHITE/BROWN



1025 WHITE/NATURE



1616 GREY







# Thor

DESIGN / JENS LANDBERG SCHRØDER

Hand-woven high-pile rug in New Zealand wool on cotton warp

160x230, 200x300 cm

Made to measure

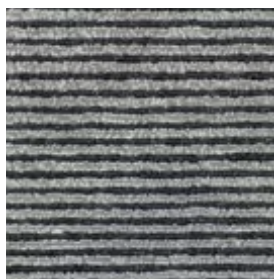
Made in the best quality New Zealand wool in a gorgeous off-white, this soft, thick high-pile rug brings a burst of understated elegance into any room. The clean aesthetic makes it a versatile choice.



1111 OFF WHITE



1214 BEIGE/CHARCOAL



1615 GREY/BLACK

# Odin

DESIGN / JENS LANDBERG SCHRØDER

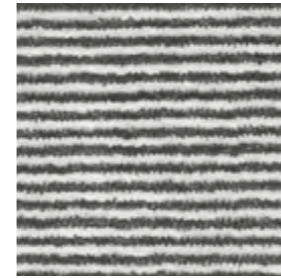
Hand-knotted pile rug in New Zealand wool and linen on cotton warp

170x240, 200x300 cm

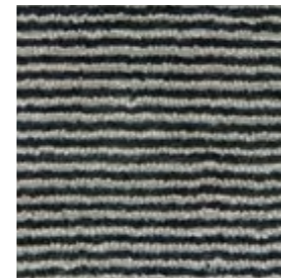
Made to measure

Using old Nepalese techniques this thick pile and loop rug has been hand-knotted in New Zealand wool and linen and some of the loops have then been cut creating the unique surface. The signature blend of quality yarn makes Odin a classic in our collection and the gentle two-toned shimmering softens the graphic look.

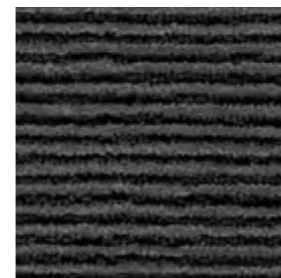




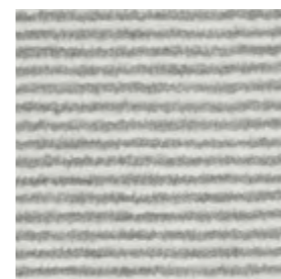
1411 CHARCOAL/OFF WHITE



1416 CHARCOAL/GREY



1615 GREY/BLACK



2711 LIGHT GREY/OFF WHITE



## Angelica

DESIGN / LISBET FRIIS

Hand-loom pile rug in New Zealand wool and viscose on cotton warp

140x200, 170x240, 200x300 cm

Made to measure

The combination of viscose mixed with the wool and the beautiful colours created by the special hand dye technique Gabbeh-dye creates a soft shimmer that looks almost like velvet. The Angelica hand-woven rug comes in the same shades of off white, grey and black as Erica. A perfect solution if you want different hand-made rugs in a matching colour scheme.

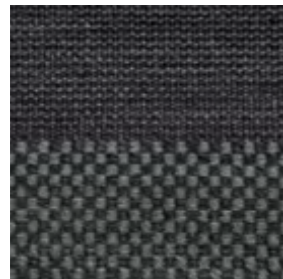
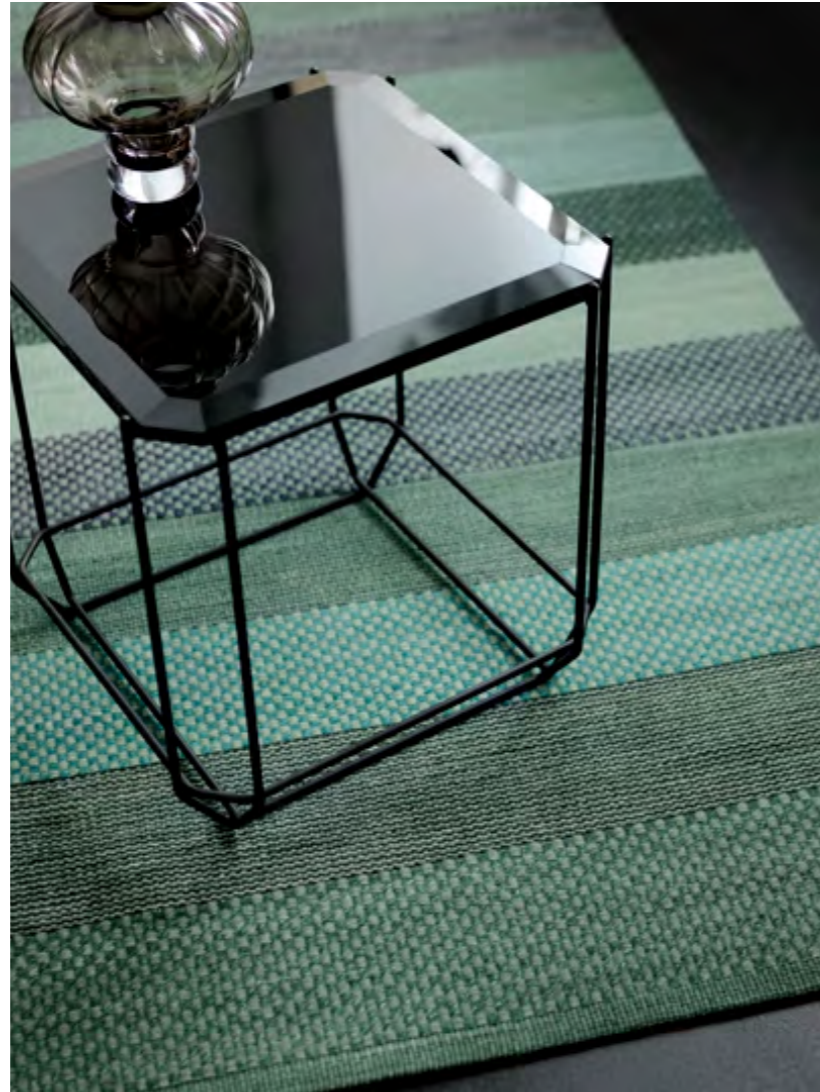
# Veronica

DESIGN / LISBET FRIIS

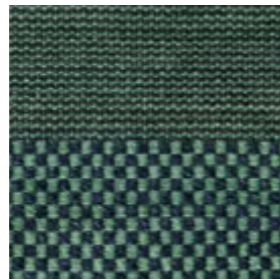
Hand-woven rug in Gabbeh-dyed New Zealand wool on cotton warp

80x240, 140x200, 170x240, 200x300 cm  
Made to measure

An inviting play with patterns guided by a carefully selected palette of strong calming indigo, deep midnight blue and two new shades of moss green and grey with notes of blue and black make this hand-woven rug in New Zealand wool a beautiful design classic. Quietly saluting the Swedish rag rugs, Veronica brings an instant feel of style and comfort to a room. This is a simple, contemporary style with refined pattern and a three-dimensional visual effect thanks to the special Gabbeh-dye technique



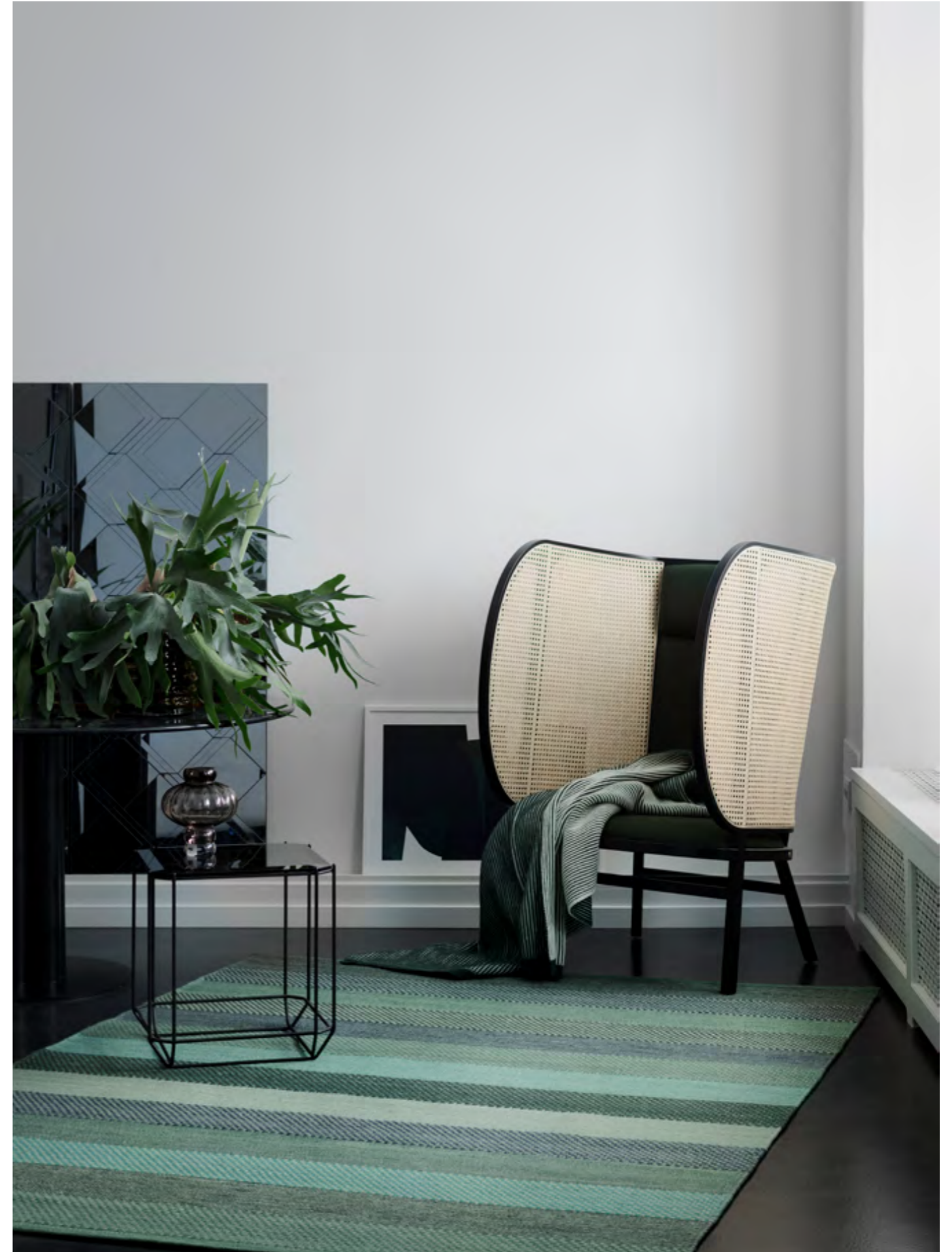
1616 GREY




1818 GREEN



1717 BLUE





A perfect rug transcends style and beauty. Soft wool, thick qualities and natural hues boost the ambience and bring a sense of grounding comfort.

# Bellis

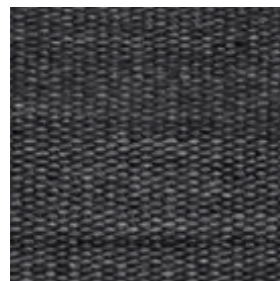
DESIGN / LISBET FRIIS

Hand-woven rug in Gabbeh-dyed New Zealand wool on cotton warp, reversible

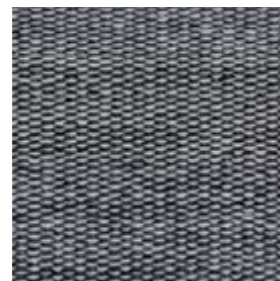
140x200, 170x240, 200x300 cm

Made to measure

Bellis is the new generation of Erica; a thicker, reversible rug in Gabbeh-dyed New Zealand wool available in four different colours resembling the changes of the sky throughout a day. From soft, beautiful nude like a rose quartz gemstone to a twilight charcoal grey. All very different colours yet they all have the same depth and tone and work harmoniously together in a room or throughout the house. Up close, the weave reveals tiny dots bringing out the beauty in the colours, which from a distance blur together into a more monochrome shade.



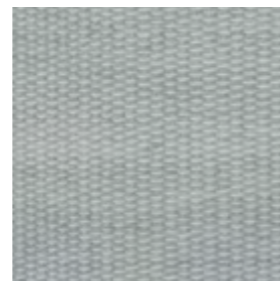
1416 CHARCOAL/GREY



1427 CHARCOAL/LIGHT GREY



3011 ROSE/OFF WHITE



3811 LIGHT BLUE/OFF WHITE



# Camelia

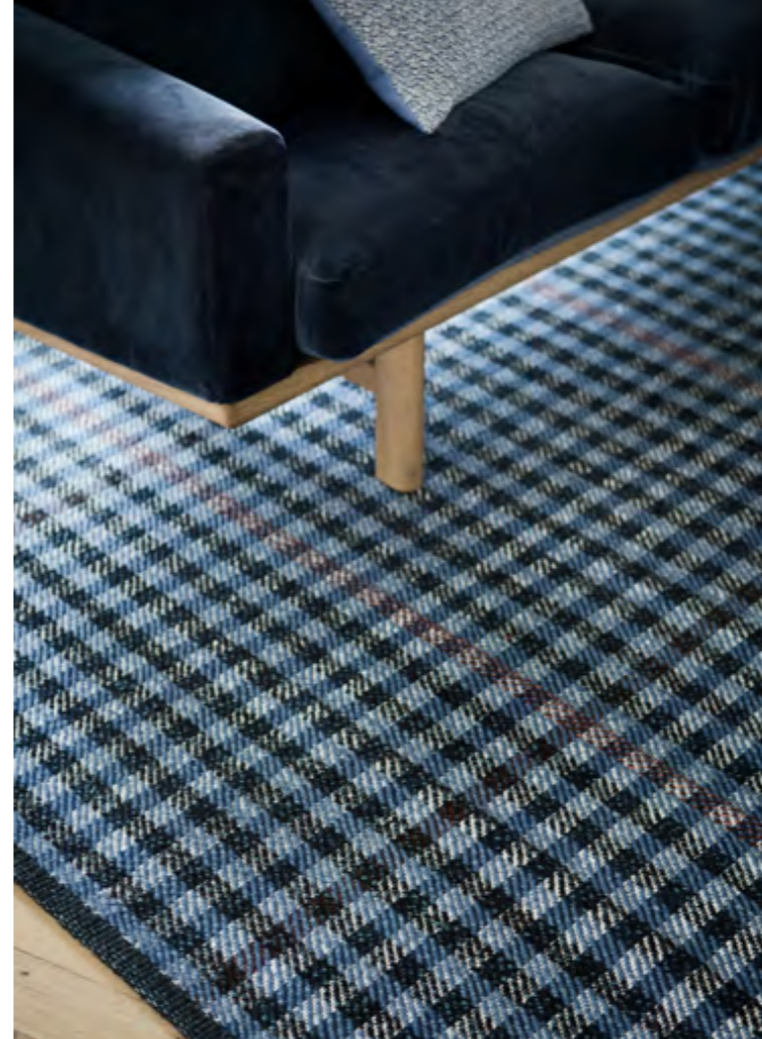
DESIGN / LISBET FRIIS

Twill-woven, hand-made rug in New Zealand wool and linen

170x240, 200x300 cm

Stunning on its own and a stylish addition in most settings. With the asymmetrical square pattern, this twill-woven rug in New Zealand wool and linen fills a room with a creative graphic pattern and deep stunning colours. These features come from the thick quality of the wool and the refined depth of the linen.





# Lotus

DESIGN / LISBET FRIIS

Twill-woven, hand-made rug in New Zealand wool and linen

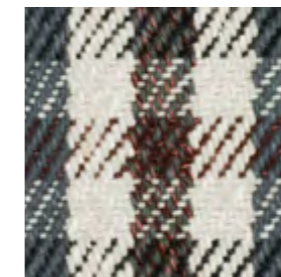
170x240, 200x300 cm

Made to measure

With a well-balanced chequer design in a stunning colour range of dark blue, aqua marine, grey and mahogany, the Lotus design introduces a quality that pushes the boundaries. Advanced craftsmanship, techniques and linen blended with the wool have made it possible to create a high quality rug with a three dimensional shimmering surface.



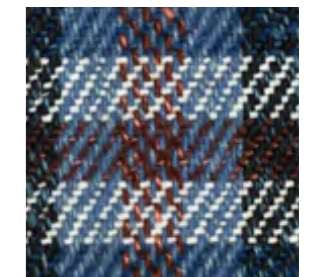
1615 GREY/BLACK



1642 GREY/MAHOGANY



1715 BLUE/BLACK



1742 BLUE/MAHOGANY





# Rosemary

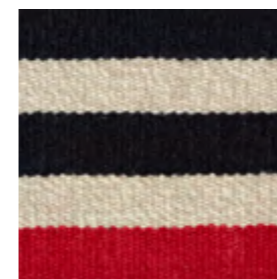
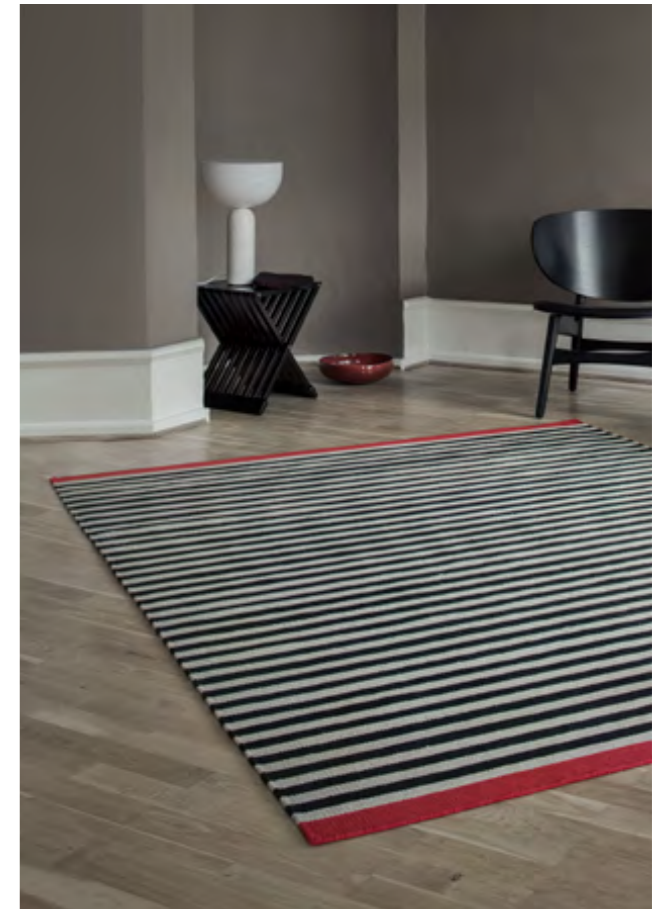
DESIGN / LISBET FRIIS

Hand-woven rug in New Zealand wool on cotton warp, reversible

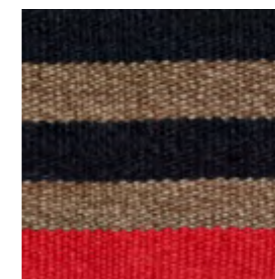
90x250, 140x200, 170x240, 200x300 cm

Made to measure

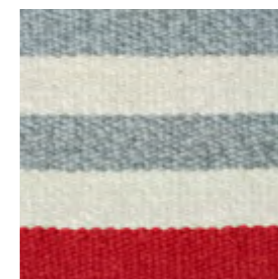
Bold yet clean and elegant - the red stripe makes this statement design stand out in any home without compromising on our design core - quality and simplicity. Each stripe is spun out of two threads, and this rug is a prime example of the attention that goes into every part of our process.



1512 BLACK/BEIGE



1522 BLACK/MAUVE



1627 GREY/LIGHT GREY



# Poppy

DESIGN / LISBET FRIIS

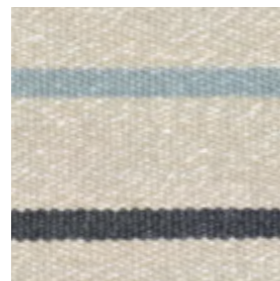
Hand-woven rug in New Zealand wool and linen on cotton warp, reversible.

80x240, 140x200, 170x240, 200x300 cm  
Made to measure

Fresh colour splashes of yellow, nude and soft blue mixed with beige bring a bit of fun to this thin and tight hand-woven rug in wool and linen. This design is fresh and lights up the room and the neutral base in all three colour variations makes sure it's not too delicate and easy to look after.



2312 YELLOW/BEIGE



3812 LIGHT BLUE/BEIGE



3012 NUDE/BEIGE



## Frida

170x240, 200x300,  
240x240, 250x350 cm  
Made to measure  
Page 8



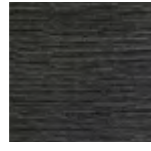
1212 BEIGE



1616 GREY

## Nanna

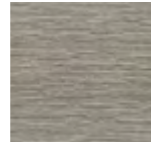
170x240, 200x300,  
250x350 cm  
Made to measure  
Page 10



1414 CHARCOAL



1616 WARM GREY



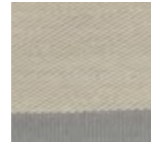
2727 LIGHT GREY

## Una

170x240, 200x300,  
250x350 cm  
Made to measure  
Page 12



1116 OFF WHITE/GREY



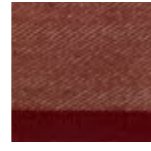
2716 LIGHT GREY/GREY



1717 AQUAMARINE



5252 AMBER



3053 LINGONBERRY

## Rune

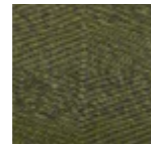
140x200, 170x240,  
200x300, 250x350 cm  
Made to measure  
Page 14



1616 GREY



1717 INDIGO



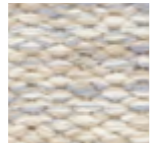
1818 FOREST

## Gimle

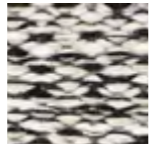
140x200, 170x240,  
200x300 cm  
Made to measure  
Page 18



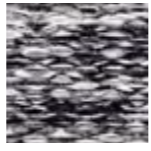
1011 WHITE/OFF WHITE



1211 BEIGE/GREY



1215 OFF WHITE/BLACK



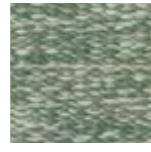
1511 BLACK/OFF WHITE

## Gimle

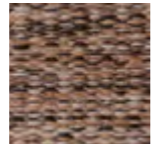
140x200, 170x240,  
200x300 cm  
Made to measure  
Page 18



5252 CORK



1818 WILLOW



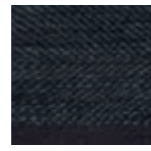
3030 MAPLE

## Felicia

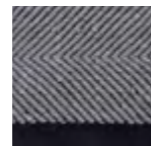
140x200, 170x240,  
200x300 cm  
Made to measure  
Page 20



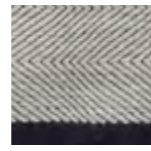
1111 OFF WHITE



1414 GRAPHITE



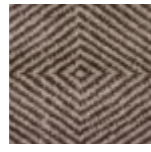
1616 GREY



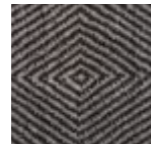
2727 LIGHT GREY

## Gisli

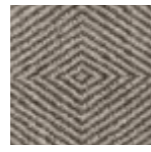
170x240, 200x300 cm  
Made to measure  
Page 22



1212 BEIGE



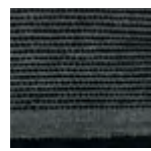
1414 CHARCOAL



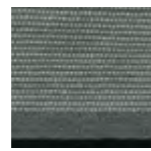
1616 WARM GREY

## Njord

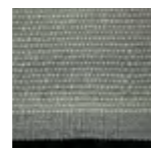
140x200, 170x240,  
200x300, 250x350 cm  
Made to measure  
Page 24



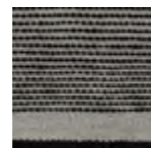
1415 CHARCOAL/BLACK



1610 GREY/WHITE



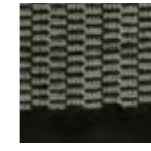
2710 LIGHT GREY/WHITE



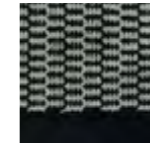
2715 LIGHT GREY/BLACK

## Gro

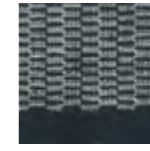
170x240, 200x300,  
250x350 cm  
Made to measure  
Page 26



4712 OLIVE/BEIGE



1511 BLACK/OFF WHITE



4812 PETROL/BEIGE



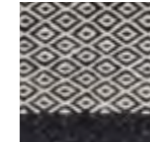
1611 GREY/OFF WHITE

## Balder

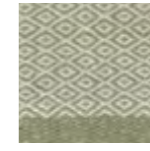
140x200, 170x240,  
200x300 cm  
Made to measure  
Page 28



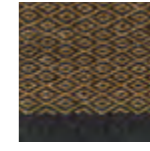
1629 GREY/MIDNIGHT



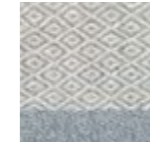
1516 BLACK/GREY



1818 FOREST



5252 UMBRA



1627 GREY/LIGHT GREY

## Munin

200x300, 250x350 cm  
Page 30



1212 DRIFTWOOD



1313 PINWOOD



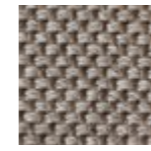
1818 FOREST



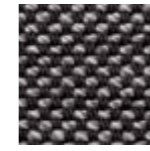
1414 STONE

## Hugin

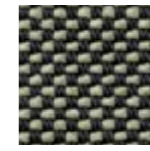
200x300, 250x350 cm  
Page 32



1213 SAND/STONE



1516 BLACK/GREY



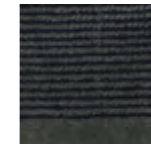
1518 BLACK/FOREST



1548 BLACK/OLIVE

## Aster

170x240, 200x300 cm  
Made to measure  
Page 34



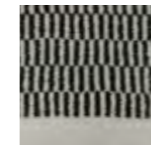
4715 OLIVE/BLACK



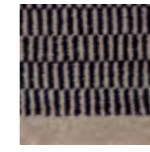
1615 GREY/BLACK

## Calla

170x240, 200x300 cm  
Made to measure  
Page 36



1016 WHITE/GREY



1229 BEIGE/MIDNIGHT BLUE



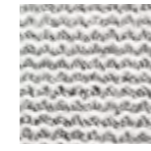
1512 BLACK/BEIGE



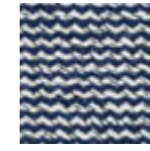
1615 GREY/BLACK

## Fenris

140x200, 170x240,  
200x300, 250x350 cm  
Made to measure  
Page 38



1116 OFF WHITE/GREY



1629 GREY/MIDNIGHT



1525 BLACK/NATURE



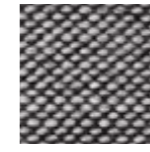
1125 OFF WHITE/NATURE

## Rolf

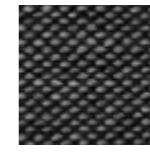
140x200, 170x240,  
200x300 cm  
Made to measure  
Page 40



1112 OFF WHITE/BEIGE



1615 GREY/BLACK



1415 CHARCOAL/BLACK

## Ask

160x230, 200x300 cm  
Made to measure  
Page 44



1616 GREY



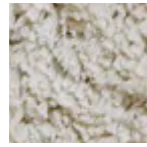
1414 CHARCOAL



1212 BEIGE

## Gjall

160x230, 200x300 cm  
Made to measure  
Page 46



1212 BEIGE



1313 BROWN



1616 GREY



3939 DARK BEIGE



1010 WHITE



1414 CHARCOAL

## Gjall

160x230, 200x300 cm  
Made to measure  
Page 48



4848 PETROL



5252 AMBER



3030 PEARL



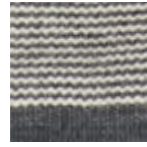
5353 RUBY



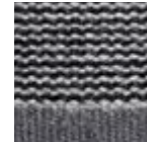
5151 TOPAZ

## Erica

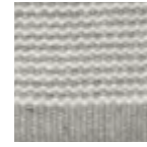
140x200, 170x240,  
200x300, 250x350 cm  
Made to measure  
Page 50



1411 CHARCOAL/OW



1516 BLACK/GREY



2711 LIGHT GREY/OW



3811 LIGHT BLUE/OW

## Gorm

140x200, 170x240,  
200x300 cm  
Made to measure  
Page 52



1414 CHARCOAL



2727 LIGHT GREY

## Loke

170x240, 200x300,  
250x350 cm  
Made to measure  
Page 54



2727 LIGHT GREY



3737 DUSTY GREEN



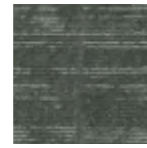
1212 BEIGE

## Loke

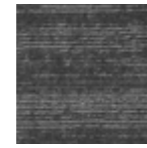
170x240, 200x300,  
250x350 cm  
Made to measure  
Page 56



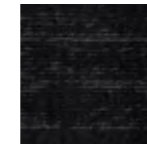
2020 TERRACOTTA



4848 PETROL



1616 GREY



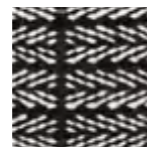
1414 CHARCOAL

## Tanne

140x200, 170x240,  
200x300 cm  
Made to measure  
Page 58



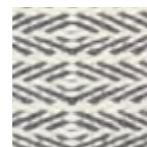
1015 WHITE/BLACK



1510 BLACK/WHITE



1610 GREY/WHITE



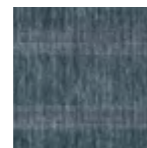
1016 WHITE/GREY

## Lily

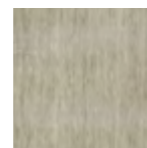
170x240, 200x300 cm  
Made to measure  
Page 60



1414 SMOKE



2929 NIGHT SKY



1212 MARBLE



1919 ORIENTAL RED

## New Freja

140x200, 170x240,  
200x300 cm  
Made to measure  
Page 62



1013 WHITE/BROWN



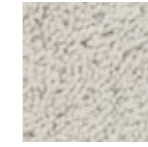
1025 WHITE/NATURE



1616 GREY

## Thor

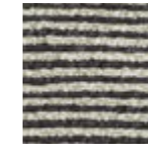
160x230, 200x300 cm  
Made to measure  
Page 64



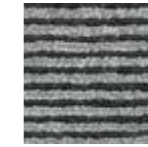
1111 OFF WHITE

## Odin

170x240, 200x300 cm  
Made to measure  
Page 66



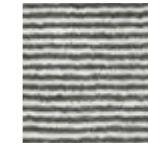
1214 BEIGE/CHARCOAL



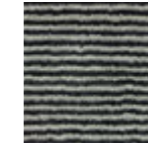
1615 GREY/BLACK

## Angelica

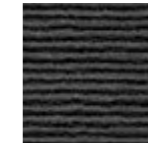
140x200, 170x240,  
200x300 cm  
Made to measure  
Page 68



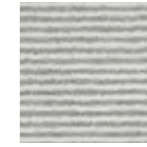
1411 CHARCOAL/OW



1416 CHARCOAL/GREY



1615 GREY/BLACK



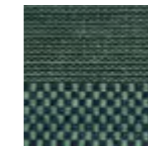
2711 LIGHT GREY/OW

## Veronica

80x240, 140x200, 170x240,  
200x300 cm  
Made to measure  
Page 70



1616 GREY



1818 GREEN



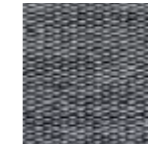
1717 BLUE

## Bellis

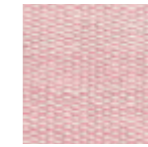
140x200, 170x240,  
200x300 cm  
Made to measure  
Page 74



1416 CHARCOAL/GREY



1427 CHARCOAL/L.GREY



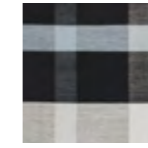
3011 ROSE/OFF WHITE



3811 LIGHT BLUE/OW

## Camelia

170x240, 200x300 cm  
Page 76

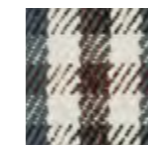


## Lotus

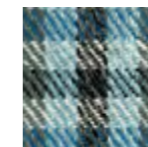
170x240, 200x300 cm  
Made to measure  
Page 78



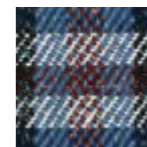
1615 GREY/BLACK



1642 GREY/MAHOGANY



1715 BLUE/BLACK



1742 BLUE/MAHOGANY

## Rosemary

90x250, 140x200,  
170x240, 200x300 cm  
Made to measure  
Page 80



1512 BLACK/BEIGE



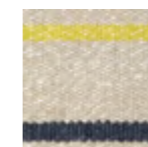
1522 BLACK/MAUVE



1627 GREY/LIGHT GREY

## Poppy

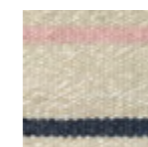
80x240, 140x200,  
170x240, 200x300 cm  
Made to measure  
Page 82



2312 YELLOW/BEIGE



3812 LIGHT BLUE/BEIGE



3012 NUDE/BEIGE

# Size Guide

A guide to help you choose the perfect size rug

Choosing the right size rug can be confusing and many have a tendency to pick a rug that is too small. Scrimping on the size can actually make a room look smaller, crowded, and cramped. As a general rule, bigger is better; a larger rug will make the room look bigger and more sophisticated.



## Sofa area

A rug is like a focal point, an anchor in your room, and there are a few things to consider when creating the right ambience and look in the living room.

Choose a statement rug that covers an ample part of the floor around the sofa. As a guide line make sure the rug extends 30 cm to either side of the sofa and at least half way under the sofa.

Chunkier arm chairs should be fully on the rug or just off the rug without leaving a gap between the furniture and the rug.

Avoid a rug that only covers the floor around a coffee table and keep side tables either on or along the edge of the rug for a cleaner look. Lighter arm chairs can be partly on the rug.

Depending on the style, you can also choose to place the rug diagonally and partly under the sofa and chairs for a more casual, contemporary look.

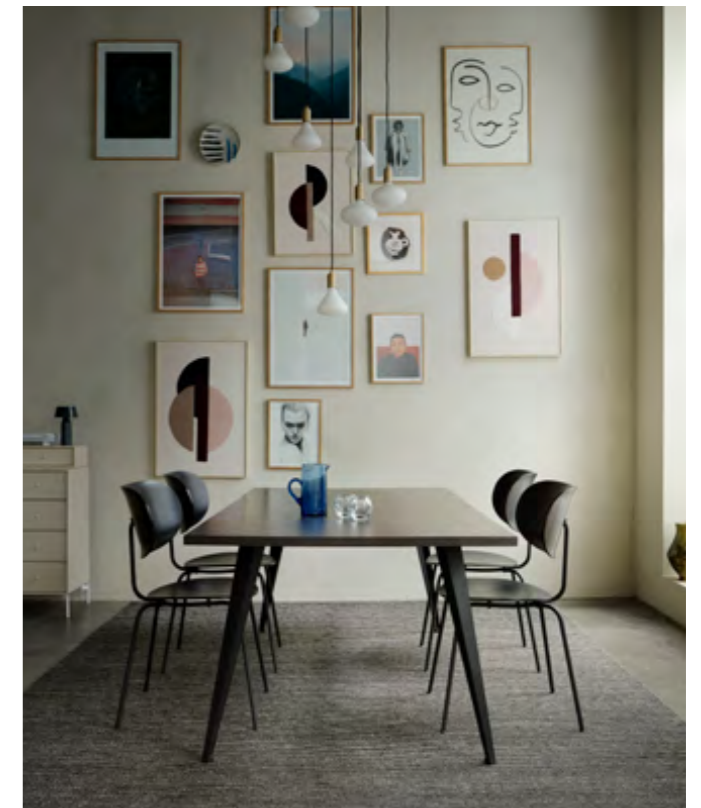


## Bedroom

In the bedroom, a rug is an important part of the cosy, calming ambience, and there are different ways to play around with the look.

For a more classic look, place the bed and side tables fully on the rug. Choose a large rug providing comfortable, softness to step onto on either side of the bed.

For a more contemporary look, the rug can be placed partly under the bed. Make sure to create symmetry all the way around.



## Dining area

When it comes to a rug under the dining table, practicality is as important as the look. If the rug is too small, the legs of the chairs will get caught and make the rug bulge. As a guide line, include 65 cm extra to allow space to comfortably pull out the chairs.

## Made to measure

---

The perfect rug is a combination of beautiful texture and distinctive pattern with rich colours or earthy natural tones that accentuate and complement the style in your home.

We have found that the right fit makes all the difference and knowing that a rug has the power to transform a room, we offer most of our designs in bespoke sizes.

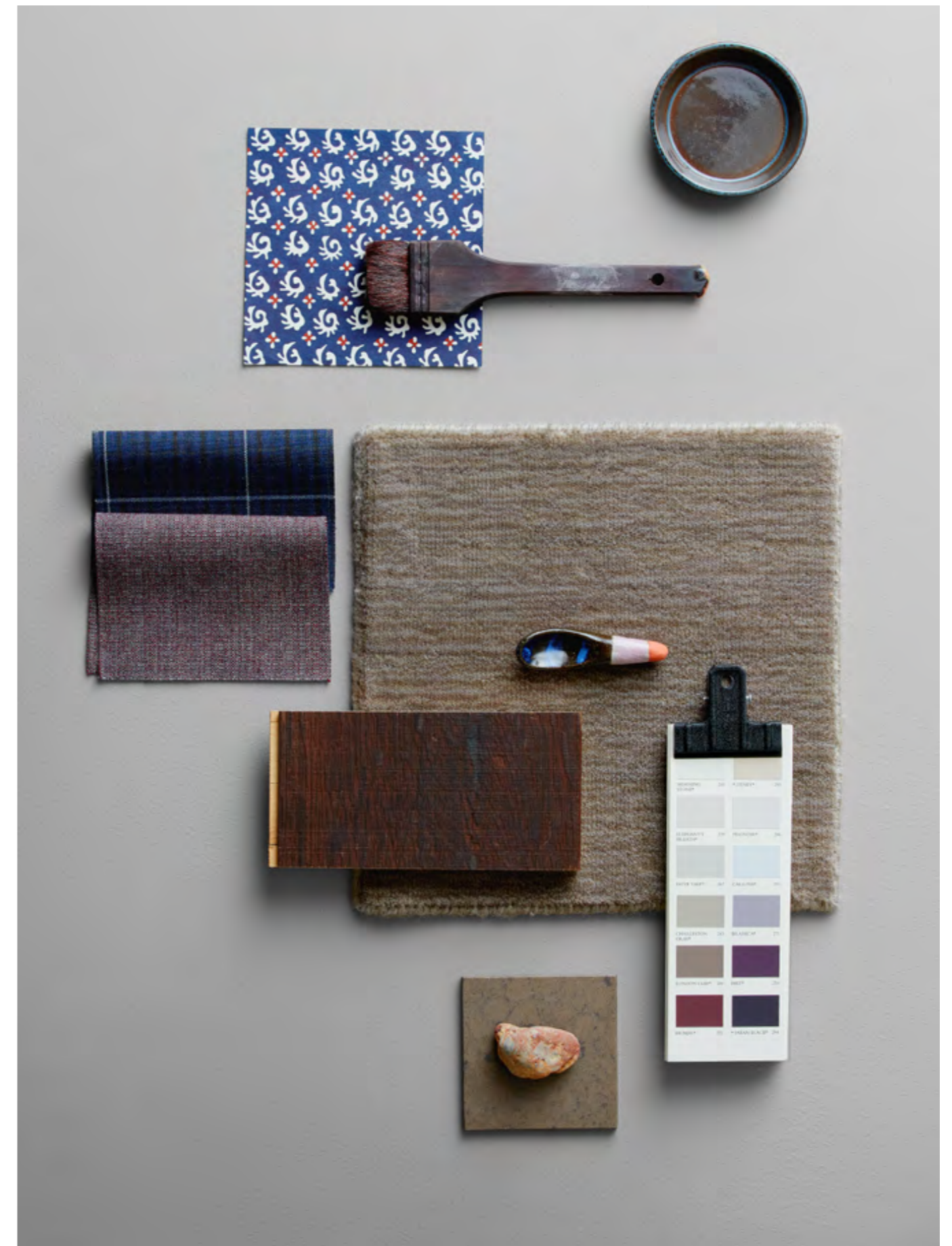
When you are looking to link together your sofas, need a little elegant square in a particular place or would like to fit your dining table and chairs on a rug without it looking cramped, you can order most of our rugs in your desired size.

Our designs can be varied in measurement, from a small 2 m<sup>2</sup> rug, to larger rugs up to 4.5 m wide and 10 metres in length. If the space needs a soft contrast, we can also make selected lines as circular rugs, which can make a room seem more spacious. We are dedicated to perfecting, refining and adding on to our selection of classic, contemporary designs and when it comes to size, we offer even more choices and flexibility.

If you need the perfect rug to fit a specific spot in your home, we have a made to measure service available for the majority of our designs.

As all our rugs are unique and hand-made, the size can vary slightly from the ordered size (+/-3 %). Irregularities in colour and weaving are characteristics of hand-made rugs. A bespoke rug can be delivered within a maximum of four months. For a surcharge it's possible to get delivery in just 10 weeks.

Please note, that you will be invoiced for a minimum of two m<sup>2</sup> if you order a smaller rug. For round shaped rugs and rugs larger than 20 m<sup>2</sup> an additional 15% will be added to the fee. Some of our designs are unavailable as circular rugs or in the largest sizes (4.5x10 m), however please contact us with any requests.



# Underlay

Structure: PES/Glass fibre yarn coated on both sides with a special anti-slip PVC-foam.

High quality underlay avoids rugs from slipping on smooth floors. The underlay is comfortable to walk on, offers impact sound insulation and protects your rug from premature wear. If flooring is treated with water-based lacquers, allow at least 3 months full drying time before using this product. Only suitable on floorings treated with solvent-free sealants. No adhesion when wet. Thickness app. 2.5 mm.

90x240, 130x190, 165x240, 190x290, 240x340 cm



# How to care

We always recommend that you use an underlay to extend the life of your rug. An underlay ensures that the rug remains in a fixed position. It also reduces the risk of any staining.

## CARE INSTRUCTIONS - RUGS OF WOOL, LINEN AND VISCOSE

### Daily cleaning:

Vacuum your rug as needed. Never vacuum your rug with the brushes of the vacuum cleaner nozzle in the extended position.

You can also give the rug a gentle shake outside.

Do not beat the rug.

### Spot cleaning, only woolen rugs:

Dab the spot very gently with a damp cloth soaked in carbonated water.

### More thorough cleaning:

We recommend professional cleaning.

Some of our kilim rugs are reversible. We recommend that you turn your rug over every six months. Do not place your rug in direct sunlight.

## CARE INSTRUCTION - OUTDOOR RUGS

### Daily cleaning:

Everyday care will keep your outdoor rug looking fresh and new for longer. Gently vacuum as often as necessary, please avoid using the beater or brush bar on the vacuum cleaner.

For other cleaning options, sweep with a soft broom or gently shake the rug outside; never beat the rug.

If needed, rinse with cold water from the garden hose, and allow both sides to dry completely as any dampness might cause mold or other damages. For the same reason, it's important to always keep the area under the rug clean and dry. The rug is also suitable for indoor use. If used indoor, we always recommend an underlay to ensure that the rug remains in a fixed position, to reduce the risk of any staining, and to extend the life of the rug.

### Spot cleaning:

Do not beat or shake the rug. Simply lay it out on a flat surface.

### More thorough cleaning:

We recommend professional cleaning. Do not expose the rug to salt or chlorine.



# Certificates



BS EN 13501-1 BFL-S1

ANGELICA  
BALDER  
BELLIS  
CALLA  
CAMELIA  
ERICA  
FELICIA  
FENRIS  
GIMLE  
GISLI  
GRO  
LOKE  
LOTUS  
NEW FREJA  
NJORD  
POPPY  
ROSEMARY  
TANNE  
VERONICA



BS EN 14215:2013  
CLASS 22 GENERAL  
DOMESTIC USE

ANGELICA  
CALLA  
CAMELIA  
FENRIS  
GIMLE  
GISLI  
GRO  
LOTUS  
ROLF



BS EN 14215:2013  
CLASS 23 HEAVY  
DOMESTIC USE

BALDER  
BELLIS  
ERICA  
FELICIA  
NEW FREJA  
NJORD  
POPPY  
ROSEMARY  
TANNE  
VERONICA

We accept no liability for designs, sizes and colours that are no longer available. We accept no liability for any inaccuracy in terms of colour reproduction in the catalogue. Most of our rugs are hand-made and there is a variation of size of up to +/-3%. Irregularities in colour and weaving are characteristics of hand-made rugs.

# Thanks

TO ALL OF YOU

Petersen Tegl  
A. Petersen  
ALIUM  
Louise Roe Gallery  
House of Finn Juhl/Onecollection  
Kristine Mandsberg  
Moebe  
Amanda Betz  
Sigrød Buus  
Yume  
Erik Jørgensen  
Anne Black  
Flügger  
Getama  
Skagerak  
FLOS Scandinavia  
& Tradition  
Berit Mogensen Lopez  
Studio Arhoj  
Mogens Koch  
Kristina Dam Studio  
LYFA  
Ferm Living  
Kvadrat  
Meyer Lavigne  
Kristina Krogh  
Nomess  
Please wait to be seated  
Overgaard & Dyrman  
RO Collection  
New works  
Pernille Snedker

Special thanks to:

Fredericia Furniture, Garde Hvalsøe and Brdr. Krüger

PHOTOGRAPHER - Bjarni B. Jacobsen

STYLING - Laura Scheuer Trøstrup / thesweetspot.dk

GRAPHIC PRODUCTION - Graphic Unit

Fabula Living ApS, Teglstrupvej 33, DK-2100 København Ø  
+45 2233 3966, info@fabulaliving.dk, www.fabulaliving.dk



Fabula Living creates high quality hand-made contemporary rugs blending a strong Scandinavian style and tradition with the ancient techniques of weaving